

SAILING INSTRUCTIONS

BRESKENS SAILING WEEKEND 2010
including the

Open Dutch Championships IRC
Open BELGIAN Championships Classic Half Ton

ABN-AMRO Cup
VDS Cup
MULTRASHIP Cup

on 27th, 28th and 29th AUGUST 2010
organised by the

COMMITTEE BRESKENS SAILING
Under authority of the Royal Dutch Boating Association and in co-operation with
the North Sea Club

Races will take place in 3 fleets on the Scheldt Estuary with starting areas Raan, Deurloo and Breskens:

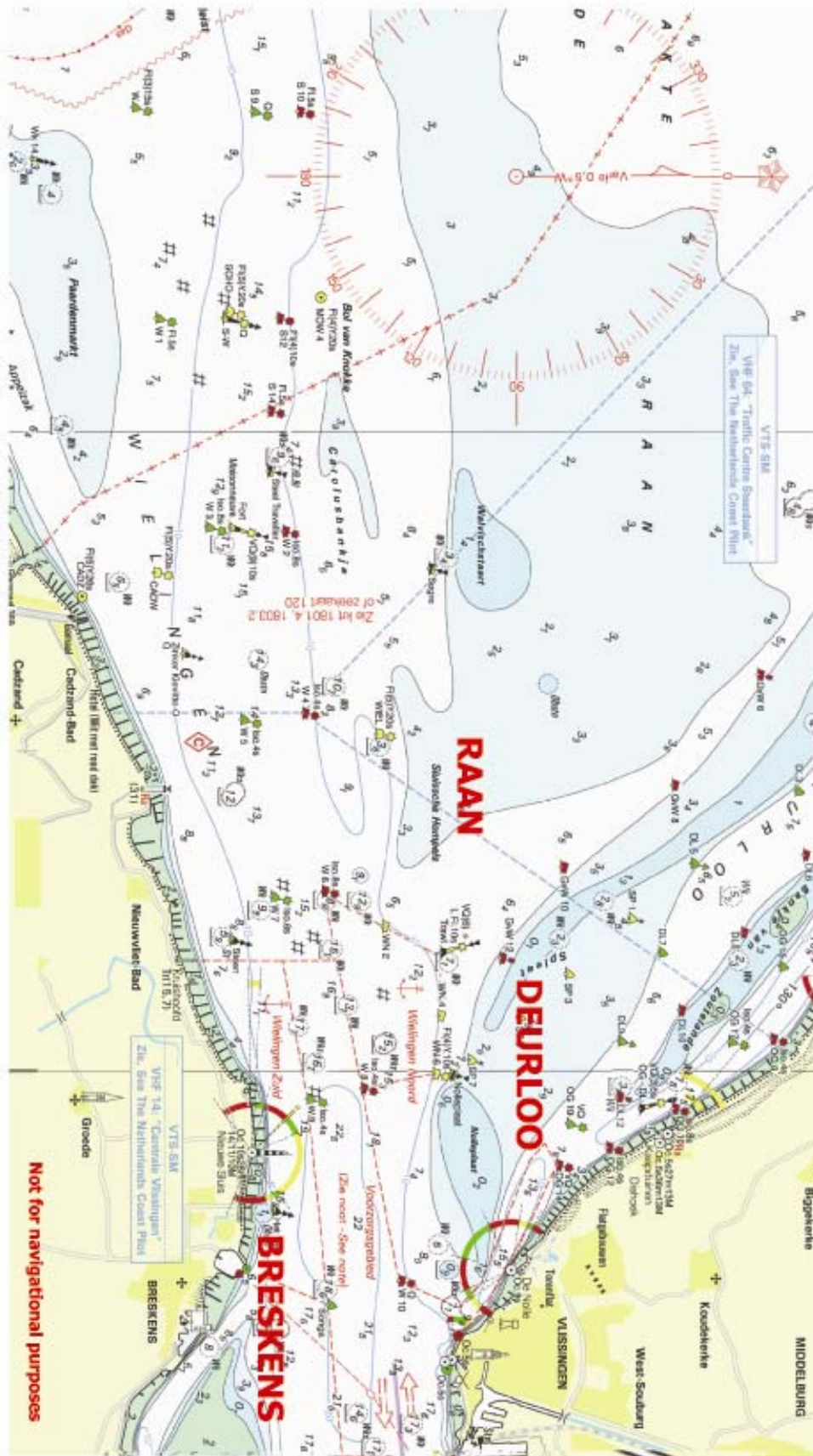
Fleet A : IRC measured boats, First 31.7 class, Classic Half Ton Class

Fleet B : MaxFun 25, Laser SB3, Tofinou and Sport boat classes

Fleet C : CR measured boats

Contents:

| | Page: |
|---|--------------|
| Introduction | 2 |
| Contents | 3 |
| Charts: Race areas Raan, Deurloo | 5 |
| Race area Breskens | 7 |
| Part 1 : General Part, applies to all fleets | 9 |
| Part 2: Fleet A | 15 |
| Open Dutch Championships | |
| IRC 1,2,3 | |
| Open Belgian Championships | |
| Classic Half Ton | |
| First 31.7 | |
| Part 3: Fleet B | 19 |
| MaxFun 25, | |
| Laser SB3, | |
| Tofinou and other Sport boats | |
| Part 4: Fleet C: | 21 |
| CR measured boats | |
| Part 5: Races around navigational | 25 |
| buoys | |
| Part 6: Windward-Leeward offshore | 35 |
| Courses around inflatable | |
| buoys | |



PART 1 - GENERAL PART, applies to all fleets

1. Rules regulations

1.1 The regatta will be governed by the following rules:

- The International Racing Rules of Sailing (RRS) 2009-2012 (RRS),
- The prescriptions of the Dutch National Authority will apply,
- The Notice of Race,
- In case of a conflict, these Sailing Instructions will prevail,
- Specific rules for each fleet are included in their fleet sailing instructions.

1.2 Every boat participating in a regatta shall carry a sail number corresponding to its measurement certificate and comply with RRS 77. This is a warning as mentioned in RRS G4.

1.3 When a boat sailing under these rules meets a vessel that is not, she shall comply with the Westerschelde Rules for preventing collision.

2. Notices to competitors.

Notices to competitors will be posted on the official notice board located near the Race Office. Code Flag "L" over a numeral pennant indicating the number of the last change will be displayed ashore.

3. Changes to the Sailing Instructions

Any change to the Sailing Instructions will be posted before 08.00 hrs on the day it will take effect, except that any change to the schedule of races will be posted by 20.00 hrs on the day before it will take effect.

4. Signals ashore

4.1 Signals ashore will be displayed at the flagpole of the Breskens Marina.

4.2 When flag **AP** (red-white pennant) alone, without a numeral pennant, is displayed ashore, "1 minute" is replaced by "not less than 60 minutes after removing". This changes RRS race signals, flag AP.

4.3 **2nd substitute:** (blue-white vertical): **Starts offshore:**

The first race of today will be started from a starting vessel at anchor in the Scheldt Estuary For **fleet A** and **C**, starting area "**RAAN**", to the west of the anchorage Wielingen-Noord. For **fleet B**, starting area "**DEURLOO**", in the southern Deurloo, north-west of the Nolleplaat.

4.4 **3rd substitute:** (white-black-white horizontal): **Starts inshore:**

The first race of today will be started at the Western breakwater of **BRESKENS**.

4.5 When flag **T** (red, white, blue vertical) beneath the 2nd or 3rd substitute will be displayed, the Fleet "**A**" boats will sail a medium distance course

4.6 When signals apply only to Fleet A, B or C, a **white square flag with a black letter A, B or C** will be displayed over the signal.

5. Schedule of Races

Friday 27th August:

ABN-AMRO Races

| | First warning signal | |
|---------|----------------------|----------|
| | inshore | offshore |
| Fleet C | 10.25 | 11.25 |
| Fleet A | 10.55 | 11.55 |

Saturday 28th August:

VDS Races

| | | |
|---------|-------|-------|
| Fleet C | 08.55 | 09.55 |
| Fleet A | 09.25 | 10.25 |
| Fleet B | | 10.25 |

Sunday, 29th August:

MULTRASHIP races

| | | |
|---------|-------|-------|
| Fleet C | 08.55 | 09.55 |
| Fleet A | 09.25 | 10.25 |
| Fleet B | | 09.25 |

On this last day of the regatta, no warning signal will be given after 15.00 hrs.

5.1 Starting groups:

See fleet Sailing Instructions

5.2 A briefing for skippers/navigators/tacticians of IRC, First 31.7 and CR measured boats (fleet A and C) will be conducted on Friday, 27th August 2010 at 09.00 hrs in the tent.

For the MaxFun 25.Laser SB3, Tofinou and sport boats (fleet B) a briefing will be conducted on Saturday morning, 28th August 2010, at 08.00 hrs in the tent.

5.3 Except for the CR classes (Fleet C), which will sail a medium long distance race on Friday as well as on Saturday and Sunday, and for the IRC classes and First 31.7 (Fleet A) on the day of the medium distance race, more races per day may be sailed.

| | | |
|----|---|----------------------------------|
| 6 | Class Flags | - See Fleet Sailing Instructions |
| 7 | Starting- and racing areas | - “ |
| 8 | Courses | - “ |
| 9 | Marks | - “ |
| 10 | Obstructions | - “ |
| 11 | The Start | - “ |
| 12 | Change of the next leg of the course | - “ |
| 13 | Finish | - “ |

14 Penalty system.

- 14.1** RRS 44.1 and 44.2 are changed so that, except for infringements of RRS Part 2 that occur within three boat lengths of a rounding, passing or finishing mark, only one turn is required, in the same direction, including one tack and one gybe.
- 14.2** For breaches of rules other than RRS part 2, a penalty may be imposed that is less than disqualification, if the Jury decides so. The scoring penalty will not be less than 10% of the total number of the boats entered for the series, with a minimum of 1 place.
- 14.3** Reserve

- 14.4** As mentioned in the Fundamental Rules of the I.S.A.F. (assistance), to recover a person who fell overboard, the RRS 42.3 (f) (propulsion) permits the use of the engine or other means of propulsion.
Such an incident must be reported on the race declaration.

In case a boat is in a position whereby she is bound to use the engine or other means of propulsion, so as not to infringe the Westerschelde Rules, RRS 42.3(h) applies. Such an incident must be reported on the race declaration. The Jury may impose a penalty when they consider the involved boat has gained a significant advantage.

- 15 Time Limits** - See Fleet Sailing Instructions.

16 Protests and requests for redress.

- 16.1** Protests shall be written on forms available at the Regatta Office and lodged before the end of the protest time. The time limit for lodging protests for all classes will be two (2) hrs when finishing in the "RAAN" and "DEURLOO" areas and one (1) hour (60 minutes) when finishing off "BRESKENS" after the last boat of its class finishes the last race of the day. The end of the protest time will be posted on the official notice board.

- 16.2** The International Jury will hear a protest as soon as practicable, approximately in the order they were received. Parties involved in protests (including witnesses) shall remain in the vicinity of the Jury room until the protest has been heard.
After the final race on the last day of the regatta, protests which may affect the awarding of a prize, will be dealt with as soon as possible after they are lodged. Protests which do not affect the awarding of a prize, may be heard after the prize giving ceremony, such at the discretion of the Jury.

- 16.3** Referring to rule RRS 66, the time limit will be 30 minutes after the hearing of the last protest of the series concerned.

- 16.4** Notices of protests by the Race Committee or Jury will be posted on the official notice board within the protest time to inform boats under RRS 61.1(b).

- 16.5** Decisions of the International Jury will be final as provided in RRS 70.5.

16.6 Arbitration

- 16.6.1** All protest involving a Rule of RRS Part 2 will be subject to arbitration.

- 16.6.2** RRS 44.1 is changed to permit a boat to take a 30% scoring penalty as calculated in RRS 44.3 (c) during the arbitration hearing.

- 16.6.3** RRS 63.1 is changed by adding:" The arbitrator may allow a protest to be withdrawn without the approval of the jury".

- 16.6.4** After a written protest is delivered to the protest desk, one representative from each boat will meet with the arbitrator unless the protestor requests that the protest be withdrawn. No witnesses will be allowed.

- 16.6.5** After taking evidence from each representative, the arbitrator will render his opinion:

- a) The protest is invalid or no boat broke a rule. If the protestor agrees, the protest may be withdrawn. If the protestor disagrees, the jury will hear the protest.
- b) One or both boats broke a rule. The boat(s) breaking a rule may accept a 30% scoring penalty as mentioned in SI 16.2 and the protest may be withdrawn. If not, the jury will hear the protest.
- c) The arbitrator decides a full protest hearing is required. In which case the jury will hear the protest.

- 16.6.6 The arbitrator will not be a member of the jury that hears the protest but will be permitted to observe the testimony given to the jury and offer testimony. This changes RRS 63.3(a).
- 16.7 The abbreviation ARB will be used for an arbitration scoring penalty. This in addition to RRS A11.

17 **Scoring System** - See Fleet Sailing Instructions.

18 **Safety regulations**

- 18.1 Any boat which retires must immediately show her national ensign and report ASAP to the Race Committee.
- 18.2 Before the first warning signal of the first race of the day, each boat shall pass the starboard end extension of the starting line within 2 boat lengths of the Race Committee starting vessel. Is the breakwater used as a signaling platform, boats shall pass the breakwater at a short distance. Each boat shall have her sail number recognisable by the Race Committee.

19 **Equipment and measurement checks**

- 19.1 A boat or equipment may be inspected at any time for compliance with her Class rules and Sailing Instructions. On the water, a boat can be instructed by a Race Committee measurer to proceed immediately to a designated area for inspection.
- 19.2 Verification of the measurement will be executed in case of any doubt. When a measurer concludes that a boat does not comply with her measurement certificate, the fees for a new measurement are to be paid by her owner. The measurer will report to the Jury. The Jury will decide on the penalty.

20 **Official boats**

- 20.1 Race Committee boats will display an orange flag.
- 20.2 Jury boats will display a flag or pennant with the letter "J", the letters "IJ" or the word "JURY".
- 20.3 Boats shall keep clear of official boats and actions of these official boats shall not be ground for redress.
- 20.4 In situations with other traffic, either before, during or after the race, directions given to competitors by a Race Committee boat shall be followed and immediately executed.

21 **Radio Communication** - See Fleet Sailing Instructions,

22. **Prizes**

CHALLENGES

- Prof. Jelle Gerritsma Trophy : best boat in IRC Class 1
- Ricus v.d. Stadt Trophy : best boat in IRC Class 2
- Challenge Tonnerre de Breskens : best boat in IRC Class 3
- John Brown Trophy : best boat during the regatta
- Challenge Hestia : best boat in the Classic Half Ton Class
- De Maas Trophy : best boat in Class First 31.7
- Westerschelde Trophy : best boat in Class MaxFun 25
- Breskens Week Trophy : best boat in the Laser SB3 class

CHAMPIONSHIP PRIZES:

- Dutch champions will be awarded with the Watersportverbond floating pennant together with a medal for each crew member of the winning boat.
- The Belgian Classic Half Ton champion will be awarded with the trophy of the Belgian Classic Half Ton Association.

OVERALL PRIZES:

- For the CR classes and the sport boats.

ABN-AMRO CUP : best boat on Friday, 27th August

VDS CUP : best boat on Saturday, 28th August

MULTRASHIP CUP : best boat on Sunday, 29th August

DAYPRIZES:

Day prizes for the class winners

If there is only one (1) boat starting in her class, no prizes will be given. This is also applicable for the overall prizes.

All competing boats will receive a souvenir.

22.1 Prize giving ceremonies

In the evening the prize giving ceremonies for the day races will be held in the tent.

The prize giving ceremony for the day races of Sunday 29th August will take place before the final prize giving ceremony of the Breskens Sailing Weekend 2010 as soon as possible after the last race for all competitors.

The time for the prize giving ceremony will be announced 15 minutes before by hoisting flag P (square white block on blue background) accompanied by a sound, on the flagpole of the Breskens Marina.

Prizes cannot be delivered to owners or their representatives who are not present during the prize giving ceremony.

23 Disclaimer of liability.

Owners or skippers are responsible for any loss, damage, injury, death included, or inconvenience to their boats or persons. They are to take into consideration the degree of training of their crew and the material state of their boat. Only at such time, are they to decide to participate in the races depending on the weather, the sea state and the weather forecast.

24 Insurance

Each participating boat shall be insured with valid third-party liability insurance with a minimum cover of € 1.200.000,- (one million two hundred thousand Euro) per event or the equivalent.

PART 2 - SAILING INSTRUCTIONS FLEET A

Open Dutch Championships IRC 1, 2 and 3, Open Belgian Championships CLASSIC HALF TON FIRST 31.7

1. Rules and Regulations.

1.1 The General part of the Breskens Sailing Weekend 2010 Sailing Instructions is part of these Sailing Instructions.

The regatta will further be governed by the following rules:

- The ISAF Offshore Special Regulations Cat. 4,
- The IRC rules 2010, part A, B and C (advertising).
- The following rules have been changed as follows:
Rule 27.4.1 – The number of crew on each boat as printed on the IRC measurement certificate + 1.
Rule 21.1.5(e) – A spare mainsail may be used as a racing replacement when the race committee notifies so on the official notice board.
Rule 21.1.5(d) – It is not compulsory to carry the spare mainsail on board on other days of the regatta.
- The Dutch National Authority Regulations for Championships Sailing and Board Sailing will apply for the Open Dutch Championships IRC.
- The Sailing Instructions of the Open North Sea Championships (ONZK) of Belgium.

5. Schedule of Races:

Friday, 27th August 2010:

A briefing for the skippers, navigators/tacticians will be conducted at 09.00 hrs in the tent.

| | inshore: | offshore: |
|----------------------|-----------|-----------|
| First warning signal | 10.55 hrs | 11.55 hrs |

Saturday, 28th August 2010:

| | | |
|----------------------|-----------|-----------|
| First Warning Signal | 09.25 hrs | 10.25 hrs |
|----------------------|-----------|-----------|

Sunday, 29th August 2010:

| | | |
|----------------------|-----------|-----------|
| First warning signal | 09.25 hrs | 10.25 hrs |
|----------------------|-----------|-----------|

Except on the day of the medium distance race, two or more races will be sailed on the same day. The first warning signal for each succeeding race will be made as soon as practicable after the finish of the previous race.

When no more races will be sailed on that day, the finish vessel will fly the AP over A.

When the medium distance race will be sailed, the flag T will be displayed in the morning at the flagpole of the Breskens Marina (see SI 4.5).

| 5.1 | Starting groups | Starting sequence | Class flag |
|-----|----------------------------------|-------------------|------------|
| | IRC 1 TCC >= 1.060 | 1 | white SLAM |
| | IRC 2 TCC >= 0.980 and < 1.060 | 2 | red SLAM |
| | IRC 3 TCC < 0.980 and First 31.7 | 3 | blue SLAM |

6. Class flags.

The coloured class flags shall be displayed on the back stay.

7. Starting- and racing area.

2nd substitute: starts offshore

Vlakte van de Raan, Sluissche Hompels, Walvischstaart. Starting area **RAAN** on the added chart. See also Signals Ashore, SI 4.3.

3rd substitute: starts inshore.

Westerschelde Estuary or Westerschelde inwards of Breskens and Flushing.

Starting area **BRESKENS** in front of the breakwaters, as indicated on the added chart. See also Signals ashore, SI 4.4.

8. Courses.

Starts offshore

The course will be displayed as stated in Part 5, courses 00/74-96 incl., and Part 6, (windward-leeward courses AA, BB or B) of these Sailing Instructions.

As displayed in Part 6, the windward-leeward courses may be laid-out with an upwind spreader mark 1' and a downwind "gate".

Starts inshore

Applicable are the courses with start and finish at Breskens as stated in Part 5 of these Sailing Instructions, courses 00/1 until 73.

The medium long offshore course for the IRC boats could be started inshore as well as offshore on either Friday, Saturday or Sunday, depending on the weather conditions.

This will be announced by hoisting flag T beneath either the 2nd or 3rd substitute on the flagpole of the Breskens Marina. See SI 4.5

9. Marks

As stated in Part 5 and Part 6 of these Sailing Instructions.

10. Obstructions

As stated in Part 5 of these Sailing Instructions, Introduction to courses.

11. The Start

11.1 Races will be started using RRS 26, with the warning signal given 5 minutes before the starting signal and with the sequence as per SI 5.1

An attention signal (**flag F** with one sound) will be given 5 minutes before the warning signal of the first class to start.

Flag F will be lowered 1 minute before the first warning signal with 1 sound.

The warning signal of each succeeding class will be displayed at the starting signal of the previous class. However, this can also be 5 minutes later in case the starting line has to be re-arranged.

11.2 Upon removal of the preparatory flag (1 minute before the starting signal) the sound signal will be 1 sound instead of 1 long sound. This changes RRS 26.

- 11.3** The starting line.
See Part 5 and Part 6 of these Sailing Instructions.
For boats sailing in the close proximity of the starting line, if a part of a boat's hull, crew or equipment is on the course side of the starting line during the two minutes before her starting signal, the Race Committee will display **flag V**. It will be displayed until all boats have sailed completely to the pre-start side, but not after the starting signal. Failure in showing flag V or accurately setting the time will be no ground for redress. This changes RRS 62.1(a).
- 11.4** The starting vessel will display a white square flag with black letter A.
- 11.5** Boats which warning signals have not been made, shall keep clear within 100 meters of any point of the starting line during the starting sequence for other races.
- 11.6** In addition to RRS 29.1, the Race Committee **may** also announce individual recalls on VHF, using the words "X-Ray". Individual recall details such as "sail numbers" and/or "boat names" may subsequently be given, but not necessarily immediately after the start. It always remains the individual responsibility of a boat to start correctly under RRS 29.1 and RRS 30.1.
- 11.7** In addition to RRS 29.2, the Race Committee **may** also announce general recalls on VHF, using the words "General Recall".
- 11.8** A boat which has not started 15 minutes after her starting signal will be scored Did Not Start. This changes RRS A4.
- 12. Change of the next leg of the course.**
See Part 6 of these Sailing Instructions.
- 13. The Finish.**
- 13.1** The finishing line.
See Part 5 and Part 6 of these Sailing Instructions.
- 13.2** A race declaration, fully completed and signed, must be presented to the Regatta Office within 2 (two) hours after finishing the last race of that day to the west of the anchorage "Wielingen-Noord" and within 1 (one) hour after finishing the last race of that day in front of the Breskens Marina.
- 15 Time limit.**
- | | |
|--------------------------|------------|
| On Friday 27th August | 19.00 hrs |
| On Saturday 28th August: | 18.00 hrs |
| On Sunday 29th August: | 17.00 hrs. |
- Boats failing to finish within the time limit, will be scored as Did Not Finish without a hearing. However, if the first boat of their class finishes within the time limit, all boats in this class which finish after the time limit but within one (1) hour after this first boat, will be scored. If only one (1) boat will continue racing on the last place in her class, the Race Committee may end the race and will in that case score the boat with the points of the last place. This changes RRS 35, A4 and A5.
- 17. Scoring system.**
- 17.1** For the calculation of the race results of the Breskens Sailing Weekend, the Open Dutch Championships IRC 2010 and the Open Belgian Championships Classic Half Ton. the "time on time" correction factor (TCC) of the IRC handicap system will be applied, as shown on the participants list. Corrected time = elapsed time x TCC.

- 17.2** Applicable for the Open Dutch Championships IRC 2010 is that at least 4 races must be sailed and further on as stated in SI 17.6 and 17.7
- 17.6** For the total score of the Breskens Sailing Weekend the Low Point Scoring System, App A4 of the RRS ISAF will apply. Except for the number of points scored in the medium distance race, which will be multiplied with 1.5.
- 17.7** When, during the event, more than four (4) races have been completed, the serial score of a boat will be her total of all scored races with discarding of her worst score. The score of the medium distance race cannot be excluded.
- 17.8** First 31.7 boats will score "boat for boat" in their class.
First 31.7 boats with an IRC TCC will also be scored in their Class 3 for the Open Dutch Championships IRC.
- 21. Radio communication**
- 21.1** While racing, a boat shall neither make radio transmissions nor receive radio communications not available to all boats. The use of mobile telephones is only allowed if not in infringement with RRS 41 (outside assistance).
The starting vessel and the Race Committee boats in starting area "**RAAN**" are using VHF **channel 72** for information to the participants.
- 21.2** In case of a start to the west of anchorage Wielingen-Noord the starting vessel may give her position on VHF 72 at 09.30 hrs and 10.00 hrs and may give a time signal.
Boats are not allowed to transmit on this channel except in case of an emergency and to report retirement.
- 21.3** When sailing and crossing the shipping lanes of the Westerschelde, either before, during or after the race, boat equipped with VHF shall keep a continuous listening watch on the appropriate channel, depending on the sailing area, VHF channel 14, 64, 65 or 69.

PART 3 – Sailing Instructions fleet B MaxFun 25, Laser SB3, Tofinou and Sport boats.

1. Rules and Regulations.

1.1 The general part of the Breskens Sailing Weekend 2010 Sailing Instructions is part of these Sailing Instructions.

The Regatta will be further governed by the Class Rules, including the Safety Regulations for MaxFun 25, Laser SB3, Tofinou and Sport boats.

5. Schedule of races.

Saturday 28th August 2010

Briefing in the tent at 08.00 hrs.

First warning signal at 10.25 hrs.

Sunday, 29th August 2010

First warning signal 09.25

Two or more races will be sailed on the same day. The first warning signal for each succeeding race to be made as soon as practicable after the finish of the previous race.

When no more races will be sailed on that day, the finish vessel will fly flag AP over A.

| 5.1 Starting groups | Starting sequence | Group flag |
|----------------------------|--------------------------|-------------------|
| MaxFun 25 | 1 | white |
| Laser SB3 | 2 | pink |
| Tofinou and sport boats | 3 | light blue |

6. Class flags

The coloured class flags shall be displayed at the back stay.

7. Starting and racing area.

2nd substitute: starts offshore

In the southern Deurloo, area Deurloo on the added chart. See also SI 4.3 Signals ashore.

3rd substitute: starts inshore

In the Vaarwater langs Hoofdplaat or Schaar van Spijkerplaat as indicated on the added charts. See also SI 4.4 Signals ashore.

8. Courses

Windward-Leeward courses as per Part 6 of these Sailing Instructions.

9. Marks as stated in Part 6 of these Sailing Instructions.

10. Obstructions.

There are no obstructions.

11. The Start

11.1 Races will be started using RRS 26, with the warning signal given 5 minutes before the starting signal and with the sequence as per SI 5.1

An attention signal (**flag F** with one sound) will be given 5 minutes before the warning signal of the first class to start.

Flag F will be lowered 1 minute before the first warning signal with 1 sound.

The warning signal of each succeeding class will be displayed at the starting signal of the previous class. However, this can also be 5 minutes later in case the starting line has to be re-arranged.

11.2 Upon removal of the preparatory flag (1 minute before the starting signal) the sound signal will be 1 sound instead of 1 long sound. This changes RRS 26.

11.3 The starting line.
See Part 6 of these Sailing Instructions.

11.4 The starting vessel will display a white square flag with black letter B.

11.5 Boats which warning signals have not been made, shall keep clear within 100 meters of any point of the starting line during the starting sequence for other races.

11.8 A boat which has not started 10 minutes after her starting signal will be scored Did Not Start. This changes RRS 63.1, A4 and A5.

12. Change of the next leg of the course.
See Part 6 of these Sailing Instructions.

13. The finish

13.1 The finishing line.
See Part 6 of these Sailing Instructions.

15. Time limits.
Saturday, 28th August 2010: 18.00 hrs
Sunday, 29th August 2010: 16.00 hrs

17. Scoring

17.6 For the total score of the Breskens Sailing Weekend the Low Point Scoring System, App A4 of the RRS ISAF will apply.

17.7 When, during the event, more than four (4) races have been completed, the serial score of a boat will be her total of all scored races with discarding of her worst score.

17.8 If 5 boats or more of the same one design class have entered in the Tofinou and sport boats group, they will be scored boat for boat in their class. Otherwise they will be scored as per their universal IRC rating.

PART 4 - Sailing Instructions Fleet C CR measured boats.

1. Rules and Regulations.

1.1 The general part of the Breskens Sailing Weekend 2010 Sailing Instructions is part of these Sailing Instructions.

The Regatta will be further governed by the

- CR Class Rules
- The Offshore Special Regulations of the ISAF, cat. 4
- The Sailing Instructions of the ONZK of Belgium.

5. Schedule of Races:

Friday, 27th August 2010:

Briefing in the tent at 09.00 hrs.

Warning signal inshore 10.25 hrs, offshore 11.25 hours.

Saturday, 28th August 2010:

Warning signal inshore: 08.55 hrs, offshore 09.55 hrs.

Sunday, 29th August 2010:

Warning signal inshore 08.55 hrs, offshore 09.55 hrs.

5.1 Starting groups.

The starting groups and the starting sequence will be posted by 20.00 hrs of Thursday, 27th August on the official notice board.

6. Class flags

The W (CR 1&2), the K (CR 3&4) and U (CR 5&6) shall be displayed at the back stay.

7. Starting- and racing area

2nd substitute: starts offshore

Vlakte van de RAAN, Sluissche Hompels, Walvischstaart. Starting area RAAN on the added chart. See also Signals ashore, SI 4.3.

3rd substitute: starts inshore.

Westerschelde Estuary or Westerschelde inwards of Breskens and Flushing.

Starting area Breskens in front of the breakwaters, as indicated on the added chart. See also Signals ashore, SI 4.4.

8. Courses.

Starts offshore

The course will be displayed as stated in Part 5, courses 00/74-96 incl. of these Sailing Instructions.

Starts inshore

Applicable are the courses with start and finish at Breskens as stated in Part 5 of these Sailing Instructions, courses 00/1 until 73.

9. Marks

As stated in Part 5 of these Sailing Instructions.

10. Obstructions

As stated in Part 5 of these Sailing Instructions, introduction to courses.

11. The Start

11.1 Races will be started using RRS 26, with the warning signal given 5 minutes before the starting signal and with the sequence as per SI 5.1

An attention signal (**flag F** with one sound) will be given 5 minutes before the warning signal of the first starting group.

Flag F will be lowered 1 minute before the warning signal with 1 sound.

The warning signal of each following group will be displayed at the starting signal of the previous group. However, this can be 5 minutes later in case the starting line has to be re-arranged.

11.2 Upon removal of the preparatory flag (1 minute before the starting signal) the sound signal will be 1 sound instead of 1 long sound. This changes RRS 26.

11.3 The starting line.

See part 5 of these Sailing Instructions.

If a part of a boat's hull, crew or equipment is on the course side of the starting line during the two minutes before her starting signal, the Race Committee will display **flag V**. It will be displayed until all boats have sailed completely to the pre-start side, but not after the starting signal. Failure in showing flag V or accurately setting the time will be no ground for redress. This changes RRS 62.1(a).

11.4 The starting vessel will display a white square flag with black letter C.

11.5 Boats which warning signals have not been made, shall keep clear within 100 meters of any point of the starting line during the starting sequence for other races.

11.6 In addition to RRS 29.1, the Race Committee **may** also announce individual recalls on VHF, using the words "X-Ray". Individual recall details such as "sail numbers" and/or "boat names" may subsequently be given, but not necessarily immediately after the start. It always remains the individual responsibility of a boat to start correctly under RRS 29.1 and RRS 30.1.

11.7 In addition to RRS 29.2, the Race Committee **may** also announce general recalls on VHF, using the words "General Recall".

11.8 A boat which has not started 15 minutes after her starting signal will be scored Did Not Start. This changes RRS A4.

13. The finish

13.1 The finishing line.

See Part 5 of these Sailing Instructions

13.2 A race declaration, fully completed and signed, must be presented to the Regatta Office within 2 (two) hours after finishing the race to the west of the anchorage "Wielingen-Noord" and within 1 (one) hour after finishing in front of the Breskens Marina

- 15. Time limit.**
On Friday 27th August 18.00 hrs
On Saturday 28th August: 18.00 hrs
On Sunday 29th August: 17.00 hrs.

Boats failing to finish within the time limit will be scored as Did Not Finish without a hearing. However, if the first boat of their class finishes within the time limit, all boats in this class which finish after the time limit but within one (1) hour after this first boat, will be scored. If only one (1) boat will continue racing on the last place in her class, the Race Committee may end the race and will in that case score the boat with the points of the last place. This changes RRS 35, A4 and A5.

17. Scoring System

For the calculation of the race results of the CR classes, the TCF correction factor applicable, Corrected time = elapsed time x TCF.

- 17.6** For the total score of the Breskens Sailing Weekend the Low Point Scoring System, App A4 of the RRS ISAF will apply.

- 17.7** All races will count.

21. Radio communication

- 21.1** While racing, a boat shall neither make radio transmissions nor receive radio communications not available to all boats. The use of mobile telephones is only allowed if not in infringement with RRS 41 (outside assistance).

The starting vessel and the Race Committee boats in starting area “**RAAN**” are using VHF **channel 72** for information to the participants.

- 21.2** In case of a start to the west of anchorage Wielingen-Noord, the starting vessel may give her position on VHF 72 at 09.30 hrs and 10.00 hrs and may give a time signal. Boats are not allowed to transmit on this channel except in case of an emergency and to report retirement.

- 21.3** When sailing and crossing the shipping lanes of the Westerschelde, either before, during or after the race, boats equipped with VHF shall keep a continuous listening watch on the appropriate channel, depending on the sailing area, VHF channel 14, 64, 65 or 69.

PART 5 - RACES AROUND NAVIGATIONAL BUOYS

INTRODUCTION:

- a. **The courses to be sailed** will be displayed on the starting vessel or on the western breakwater of Breskens, not later than the warning signal until the starting signal by means of numeral boards.
When the numeral boards **00** will be displayed, the course to be sailed will be announced on VHF channel 72.
- b. **Course marks.**
- 1 Only the in the courses mentioned buoys, pillars, shoals and inflatable buoys are marks of the course and must be rounded or passed on the required side.
 - 2 In the **vicinity of a shoal** as a mark of the course, RvW 31 is not applicable.
 - 3 **Ferry harbour Breskens**
Competitors are obliged to stay out of the line between the light structures of the ferry harbour of Breskens.
 - 4 There are a few marks special laid for the races, as follows:
Zeilw1. An inflatable buoy or an anchored official boat, which also can be used as a starting and/or finishing vessel to the north of the Vaarwater van Hoofdplaat, opposite the western breakwater of the Breskens harbour.
Buoy 1 An inflatable buoy as the windward mark of the starting vessel courses offshore 74 till 96 included.
 5. Following pillars are mentioned in the courses:
VR A pillar on the north side van the Vlakte van de Raan in position 51° 30.34'N – 03° 14.6'E.
MOW4 A pillar on the Bol van Knokke in position 51° 25.1N - 03° 07.05'E.
MOW1 A pillar on 2.6" to the west of the entrance of Zeebrugge Harbour in position 51° 23.62'N – 03° 07.05'E.
MOW0 A pillar on the north side of the Wandelaar shoal in position 51° 23.62'N – 03° 02.80'E,

START AND FINISH AT BRESKENS, COURSES 1 to 73 included.

- 11.3 The STARTING LINE and the FINISHING LINE is the line between the light structure on the Western breakwater of the commercial harbour of Breskens and the inflatable buoy Zeilw1 or the orange flag (starting vessel) / blue flag (finishing vessel) on the anchored Race Committee vessel Zeilw1.**

**STARTS IN EASTERN DIRECTION
SAILING AREA: WESTERSCHELDT INWARD**

00 Course will be announced on VHF channel 72 (see introduction)

| | | |
|-----------|--|--------------|
| 1 | Start, VH1 to P, finish | 4,5' |
| 2 | Start, VH20 to SB, finish | 9,5' |
| 3 | Start, VH11 to SB, PP1 to SB, TG2 to P , A3 to P, TG2 to SB, VH11 to P, finish | 14,0' |
| 4 | Start, VH11 to SB, PP1 to SB, TG2 to P, A3 to P, TG2 to SB, VH11 to P, finish line, VH2 to SB, ARV-VH to P, VH2 to P, finish line, VH3 to P and back to the finish | 21,0' |
| 5 | Start, VH11 to SB, PP1 to SB, TG2 to P, A3 to P, TG2 to SB, VH11 to P, finish line, VH2 to SB, ARV-VH to P, VH2 to P, finish line, VH20 to SB, finish | 25,3' |
| 6 | Start, VH11 to SB, PP1 to SB, TG2 to P, A3 to P, TG2 to SB, VH11 to P, finish line, VH2 to SB, ARV-VH to P, VH2 to P, finish line, VH11 to SB, PP1 to SB, TG2 to P, A3 to P, TG2 to SB, VH11 to P, finish, | 29,2' |
| 7 | Start, VH1 to P, finishing line, VH2 to SB, ARV-VH to SB, SS5 to P, ARV1 to P, VH2 to P, finish | 10,8' |
| 8 | Start, VH20 to SB, finish line, VH2 to SB, ARV-VH to SB, SS5 to P, ARV1 to P, VH2 to P, finish | 15,1' |
| 9 | Start, VH20 to SB, finish line, VH2 to SB, ARV-VH to SB, SS11 to SB, ARV1 to P, VH2 to P, finish | 18,1' |
| 10 | Start, VH11 to SB, PP1 to SB, TG2 to P, TG8 to P, 15A to SB, SS2 to P, ARV-VH to P, VH2 to P, finish | 15,5' |
| 11 | Start, VH11 to SB, PP1 to SB, TG2 to P, TG8 to P, 15A to SB, SS2 to P, ARV-VH to P, VH2 to P, finish line, VH1 to P, finish | 19,9' |
| 12 | Start, VH11 to SB, PP1 to SB, TG2 to P, TG8 to P, 15A to SB, SS2 to P, ARV-VH to P, VH2 to P, finish line, VH5 to P, finish | 21,4' |
| 13 | Start, VH11 to SB, PP1 to SB, TG2 to P, TG8 to P, 15A to SB, SS2 to P, ARV-VH to P, VH2 to P, finish line, VH9 to P, finish | 23,4' |
| 14 | Start, VH11 to SB, PP1 to SB, TG2 to P, TG8 to P, 15A to SB , SS2 to P, ARV-VH to P, VH2 to P, finish line, VH20 to SB, finish | 22,4' |

| | | |
|-----------|--|--------------|
| 15 | Start, VH11 to SB, PP1 to SB, TG2 to P, TG8 to P, 15A to SB, SS2 to P, ARV-VH to P, SS5 to P, SS2 to P, ARV-VH to P, VH2 to P, finish | 21,4' |
| 16 | Start, VH11 to SB, PP1 to SB, TG2 to P, TG8 to P, 15A to SB, SS2 to P, ARV-VH to P, SS5 to P, SS2 to P, ARV-VH to P, SS5 to P, SS2 to P, ARV-VH to P, VH2 to P, finish | 27,1' |
| 17 | Start, VH11 to SB, PP1 to SB, TG2 to P, TG8 to P, 15A to SB, SS2 to P, ARV-VH to P, VH2 to P, finish line, VH11 to SB, PP1 to SB, TG2 to P, TG8 to P, 15A to SB, SS2 to P, ARV-VH to P, VH2 to P, finish | 30,6' |
| 18 | Start, VH11 to SB, PP1 to SB, TG2 to P, TG8 to P, 15A to SB, Hooge Platen to P, ARV-VH to P, VH2 to P, finish line, VH11 to SB, PP1 to SB, TG2 to P, TG8 to P, 15A to SB, Hooge Platen to P, ARV-VH to P, VH2 to P, finish | 29,7' |
| 19 | Start, VH11 to SB, PP1 to SB, TG2 to P, TG8 to P, 15A to SB, Hooge Platen to P, ARV1 to SB, SS2 to SB, SS5 to SB, ARV-VH to P, VH2 to P, finish | 19,2' |
| 20 | Start, VH11 to SB, PP1 to SB, TG2 to P, TG8 to P, 15A to SB, Hooge Platen to P, ARV1 to SB, SS2 to SB, SS5 to SB, ARV1 to SB, SS2 to SB, SS5 to SB, ARV-VH to P, VH2 to P, finish | 23,6' |

STARTS TO THE WEST

SAILING AREA: WESTERSCHELDT INWARD, FLUSHING ROADS

| | | |
|-----------|--|--------------|
| 00 | Course will be announced on VHF channel 72 (See introduction) | |
| 21 | Start, VH2 to SB, ARV-VH to SB, Hooge Platen to SB, 15A to P, TG8 to SB, TG2 to SB, VH11 to P, finish | 14,7' |
| 22 | Start, VH2 to SB, ARV-VH to SB, Hooge Platen to SB, 15A to P, TG8 to SB, TG2 to SB, VH11 to P, finish line, VH2 to P, VH1 to P, finish | 19,7' |
| 23 | Start, VH2 to SB, ARV-VH to SB, Hooge Platen to SB, 15A to P, TG8 to SB, TG2 to SB, VH11 to P, finish line, VH2 to P, VH20 to SB, finish | 24,1' |
| 24 | Start, VH2 to SB, ARV-VH to SB, Hooge Platen to SB, 15A to P, TG8 to SB, TG2 to SB, VH11 to P, finish line, VH2 to SB, ARV-VH to SB, Hooge Platen to SB, 15A to P, TG8 to SB, TG2 to SB, VH11 to P, finish | 29,4' |
| 25 | Start, VH2 to SB, ARV-VH to SB, SS2 to SB, SS5 to SB, ARV-VH to P, VH2 to P, finish | 7,0' |
| 26 | Start, VH2 to SB, ARV-VH to SB, SS2 to SB, SS8 to SB, ARV-VH to P, VH2 to P, finish | 8,8' |
| 27 | Start, VH2 to SB, ARV-VH to SB, SS2 to SB, SS5 to SB, SS2 to SB, SS8 to SB, ARV-VH to P, VH2 to P, finish | 10,5' |
| 28 | Start, VH2 to SB, ARV-VH to SB, SS2 to SB, SS5 to SB, ARV1 to SB, SS2 to SB, SS5 to SB, ARV-VH to P, VH2 to P, finish | 11,7' |
| 29 | Start, VH2 to SB, ARV-VH to SB, SS2 to SB, SS5 to SB, ARV1 to SB, SS2 to SB, SS5 to SB, ARV1 to SB, SS2 to SB, SS5 to SB, ARV-VH to P, VH2 to P, finish | 16,1' |

| | | |
|--|---|--------------|
| 30 | Start, VH2 to SB, ARV-VH to SB, SS2 to SB, ARV3 to SB, SS2 to SB, ARV3 to SB, ARV-VH to SB, SS2 to SB, ARV1 to SB, SS2 to SB, ARV1 to SB, ARV-VH to P, VH2 to P, finish | 17,1' |
| 31 | Start, VH2 to SB, ARV-VH to SB, SS2 to SB, ARV1 to P, VH2 to P, VH8 to SB, finish. | 9,8' |
| 32 | Start, VH2 to SB, ARV-VH to SB, SS2 to SB, SS8 to SB, ARV1 to P, VH2 to P, finish line, VH1 to P, finish | 12,5' |
| 33 | Start, VH2 to SB, ARV-VH to SB, SS2 to SB, 13A to SB, ARV1 to P, VH2 to P, finish line, VH1 to P, finish | 16,5' |
| 34 | Start, VH2 to SB, ARV-VH to SB, SS2 to SB, 13A to SB, ARV1 to P, VH2 to P, finish line, VH5 to P, finish | 18,1' |
| 35 | Start, VH2 to SB, ARV-VH to SB, SS2 to SB, 13A to SB, ARV1 to P, VH2 to P, finish line, VH20 to SB, finish | 21,5' |
| 36 | Start, VH2 to SB, ARV-VH to SB, SS5 to P, SS2 to P, SS5 to P, SS2 to P, ARV-VH to P, VH2 to P, finish | 8,4' |
| 37 | Start, VH2 to SB, ARV-VH to SB, ARV3 to P, SS2 to P, ARV1 to P, SS5 to P, SS2 to P, ARV-VH to P, VH2 to P, finish | 11,0' |
| 38 | Start, VH2 to SB, ARV-VH to SB, SS5 to P, SS2 to P, ARV1 to P, SS5 to P, SS2 to P, ARV-VH to P, VH2 to P, finish | 11,5' |
| 39 | Start, VH2 to SB, ARV-VH to SB, SS5 to P, SS2 to P, ARV-VH to P, SS5 to P, SS2 to P, ARV-VH to P, VH2 to P, finish | 13,0' |
| 40 | Start, VH2 to SB, ARV-VH to SB, SS5 to P, SS2 to P, ARV1 to P, SS5 to P, SS2 to P, ARV1 to P, SS5 to P, SS2 to P, ARV-VH to P, VH2 to P, finish | 15,8' |
| SAILING AREA: ESTUARY WESTERSCHELDT | | |
| 41 | Start, Het Veer to P, W8 to P, Trawl to P, W5 to P, W9 to P, Het Veer to SB, finish | 12,5' |
| 42 | Start, Het Veer to P, W8 to P, GvW12 to P, W5 to P, W9 to P, Het Veer to SB, finish | 13,0' |
| 43 | Start, Het Veer to P, W8 to P, GvW12 to P, W3 to P, W9 to P, Het Veer to SB, finish | 18,0' |
| 44 | Start, Het Veer to P, W8 to SB, NP6 to P, W8 to P, W6 to SB, Trawl to SB, W8 to SB, Het Veer to SB, finish | 12,9' |
| 45 | Start, Het Veer to P, W8 to SB, NP6 to P, W8 to P, W6 to SB, GvW12 to SB, W8 to SB, Het Veer to SB, finish | 13,8' |
| 46 | Start, Het Veer to P, W8 to SB, NP6 to P, W8 to P, W6 to SB, GvW10 to SB, W8 to SB, Het Veer to SB, finish | 15,4' |
| 47 | Start, Het Veer to P, W8 to P, SP7 to P, W6 to P, W8 to P, SP7 to P, W6 to P, W8 to SB, Het Veer to SB, finish | 16,4' |

| | | |
|-----------|--|--------------|
| 48 | Start, Het Veer to P, W8 to P, GvW12 to SB, GvW10 to SB, GvW8 to P, W4 to P, W6 to SB, W8 to SB, Het Veer to SB, finish | 16,7' |
| 49 | Start, Het Veer to P, W8 to P, GvW12 to SB, GvW10 to SB, GvW8 to P, Segre to SB, W2 to P, W4 to SB, W6 to SB, W8 to SB, Het Veer to SB, finish | 20,4' |
| 50 | Start, Het Veer to P, W8 to SB, NP6 to P, WN6 to SB, GvW12 to SB, GvW8 to P, WN2 to P, NP2 to SB, Het Veer to SB, finish | 17,2' |
| 51 | Start, Het Veer to P, W8 to SB, NP6 to P, WN6 to SB, GvW12 to SB, GvW8 to P, WN2 to P, NP2 to SB, W6 to SB, Trawl to SB, NP2 to SB, Het Veer to SB, finish | 22,2' |
| 52 | Start, Het Veer to P, W8 to SB, NP6 to P, WN6 to SB, GvW12 to SB, GvW8 to P, WN2 to P, NP6 to SB, W8 to P, W6 to SB, Trawl to SB, WN6 to SB, Het Veer to SB, finish | 23,6' |
| 53 | Start, Het Veer to P, W8 to P, GvW12 to SB, GvW10 to P, W4 to P, W6 to P, GvW10 to P, W4 to P, W6 to SB, W8 to SB, Het Veer to SB, finish | 21,5' |
| 54 | Start, Het Veer to P, W8 to P, GvW12 to SB, GvW10 to P, W4 to P, W6 to P, GvW10 to P, W4 to P, W6 to P, GvW10 to P, W4 to P, W6 to SB, W8 to SB, Het Veer to SB, finish | 28,7' |
| 55 | Start, Het Veer to P, W8 to P, GvW12 to P, W4 to P, W6 to SB, W8 to P, GvW12 to P, W4 to P, W6 to SB, W8 to SB, Het Veer to SB, finish | 22,5' |
| 56 | Start, Het Veer to P, W8 to P, GvW12 to SB, GvW10 to SB, GvW8 to P, W4 to P, W6 to SB, W8 to P, GvW12 to SB, GvW10 to SB, GvW8 to P, W4 to P, W6 to SB, W8 to SB, Het Veer to SB, finish | 28,9' |
| 57 | Start, Het Veer to P, W8 to P, GvW12 to P, S12 to P, W2 to SB, W4 to SB, W6 to SB, W8 to SB, Het Veer to SB, finish | 21,7' |
| 58 | Start, Het Veer to P, W8 to P, GvW12 to P, S12 to P, W2 to SB, W4 to SB, W6 to SB, W8 to P, GvW12 to SB, Het Veer to SB, finish | 23,0' |
| 59 | Start, Het Veer to P, W8 to P, GvW12 to P, S10 to P, S12 to SB, W2 to SB, W4 to SB, W6 to SB, W8 to SB, Het Veer to SB, finish | 26,7' |
| 60 | Start, Het Veer to P, W9 to SB, W7 to SB, W5 to SB, W3 to SB, W9 to P, Het Veer to SB, finish | 18,0' |
| 61 | Start, Het Veer to P, W9 to SB, W7 to SB, W5 to SB, W3 to SB, GvW10 to P, W3 to P, W5 to P, W7 to P, W9 to P, Het Veer to SB, finish | 26,5' |
| 62 | Start, Het Veer to P, W8 to P, W6 to P, W4 to SB, GvW12 to SB, W8 to SB, W4 to SB, GvW12 to SB, W8 to SB, Het Veer to SB, finish | 22,3' |
| 63 | Start, Het Veer to P, W8 to P, W6 to P, W4 to SB, GvW8 to SB, GvW10 to P, GvW12 to P, W8 to SB, Het Veer to SB, finish | 16,7' |
| 64 | Start, Het Veer to P, W8 to P, W6 to P, W4 to P, W2 to SB, Segre to P, GvW8 to SB, GvW10 to P, GvW12 to P, W8 to SB, Het Veer to SB, finish | 20,4' |
| 65 | Start, Het Veer to P, W8 to P, W4 to SB, GvW8 to SB, GvW10 to P, GvW12 to P, W8 to SB, W4 to SB, GvW8 to SB, GvW10 to P, GvW12 to P, W8 to SB, Het Veer to SB, finish | 27,7' |

VLAKTE VAN DE RAAN/SCHOONEVELD/WESTPIT/THORNTON BANK

| | | |
|-----------|--|--------------|
| 00 | Course will be announced on VHF channel 72 (see introduction) | |
| 66 | Start, Het Veer to P, W8 to P, GvW2 to P, VR to P, Wk11 to P, MOW4 to SB, Trawl to SB, W8 to SB, Het Veer to SB, finish | 40,0' |
| 67 | Start, Het Veer to P, W8 to P, GvW2 to SB, Westpit to SB, ZSB to SB, VR to P, Trawl to SB, W8 to SB, Het Veer to SB, finish | 42,0' |
| 68 | Start, Het Veer to P, W8 to P, GvW2 to P, VR to P, Wk11 to SB, Westpit to SB, Samselbu to P, MOW4 to SB, Trawl to SB, W8 to SB, Het Veer to SB, finish | 54,5' |
| 69 | Start, Het Veer to P, W8 to P, GvW2 to P, VR to P, Wk11 to SB, Westpit to SB, Samselbu to P, VR to SB, Trawl to SB, W8 to SB, Het Veer to SB, finish | 60,0' |
| 70 | Start, Het Veer to P, W8 to P, Westpit to P, Trawl to SB, W8 to SB, Het Veer to SB, finish | 36,0' |
| 71 | Start, Het Veer to P, W8 to P, Westpit to P, Wk11 to P, MOW4 to SB, Trawl to SB, W8 to SB, Het Veer to SB, finish | 47,5' |
| 72 | Start, Het Veer to P, W8 to P, TB to P, Samselbu to P, MOW4 to SB, Trawl to SB, W8 to SB, Het Veer to SB, finish | 51,0' |
| 73 | Start, Het Veer to P, W8 to P, GvW2 to P, VR to P, Wk11 to SB, Westpit to P, Wk9 to P, Wk11 to SB, VR to SB, Trawl to SB, W8 to SB, Het Veer to SB, finish | 62,0' |

**STARTINGVESSEL COURSES OFFSHORE 74 TO 96 INCLUDED
STARTING AREA: SLUISSCHE HOMPELS**

8. COURSE

The numeral of the course will be displayed on the starting vessel not later than the preparatory signal until the starting signal by means of black boards with red numerals (this changes RRS 27.1)

11.2 THE STARTING LINE

Between the orange flag on the starting vessel to Starboard and the yellow inflatable buoy to Port.

An inner limit mark may be used nearby the starting vessel.

This mark is situated on or nearby the starting line and must be considered as a mark of the starting line.

THE FIRST LEG

The distance between the starting vessel to buoy 1 will be displayed on the starting vessel not later than the warning signal on a yellow board with the dark blue letter C, D, E or F, which indicates the approximate distance to buoy 1

Letter C = appr. 1.0 NM

Letter D = appr. 1.5 NM

Letter E = appr. 2.0 NM

Letter F = appr. 2.5 NM

The course of the first leg will be displayed on the starting vessel with 3 black numerals on yellow boards.

A red flag on the starting vessel means that buoy 1 must be rounded or passed to Port.

A green flag on the starting vessel means that buoy 1 must be rounded or passed to SB.

13.1 FINISHING LINE AT BRESKENS. This is the line between the light structure on the Western breakwater of the commercial harbour of Breskens and the blue flag on the finishing vessel.

In case the finishing vessel is not in position, the finishing line will be the light structure on the Western breakwater of the commercial harbour of Breskens and the red conical buoy VH2A.

| | | |
|-----------|---|------------|
| 00 | Course will be announced on VHF channel 72 (see introduction) | |
| 74 | Start, buoy 1, Trawl to P, GvW10 to P, WN2 to P, WN6 to SB, Het Veer to SB, finish | 10' |
| 75 | Start, buoy 1, Trawl to P, GvW10 to P, WN2 to P, GvW12 to SB, WN6 to SB, Het Veer to SB, finish | 11' |
| 76 | Start, buoy 1, Trawl to P, GvW8 to P, WN2 to P, GvW12 to SB, WN6 to SB, Het Veer to SB, finish | 14' |
| 77 | Start, buoy 1, WN2 to P, WN6 to P, Trawl to P, W8 to SB, Hat Veer to SB, finish | 9' |

| | | |
|-----------|---|------------|
| 78 | Start, buoy 1, WN2 to P, WN6 to P, GvW10 to P, Trawl to P, W8 to SB Het Veer to SB, finish | 12' |
| 79 | Start, buoy 1, WN2 to P, WN6 to P, GvW10 to P, Trawl to P, WN6 to P, GvW12 to P, Trawl to P, W8 to SB, Het Veer to SB, finish | 15' |
| 80 | Start, buoy 1, GvW2 to P, VR to P, GvW6 to SB, Trawl to P, W8 to SB, Het Veer to SB, finish | 28' |
| 81 | Start, buoy 1, GvW2 to SB, Botkil W to SB, Botkil N to P, Grauw to P, Trawl to P, W8 to SB, Het Veer to SB, finish | 31' |
| 82 | Start, buoy 1, GvW2 to P, VR to SB, Westpit to SB, Grauw to SB, Wk27 to P, Trawl to P, W8 to SB, Het Veer to SB, finish | 34' |
| 83 | Start, buoy 1, GvW2 to P, VR to SB, Westpit to SB, Botkil N to SB, Grauw to P, Wk27 to P, Trawl to P, W8 to SB, Het Veer to SB, finish | 38' |
| 84 | Start, buoy 1, GvW2 to P, Grauw to SB, Westpit to SB, Botkil N to SB, VR to P, GvW6 to SB, Trawl to P, W8 to SB, Het Veer to SB, finish | 42' |
| 85 | Start, buoy 1, GvW8 to P, GvW2 to P, VR to P, Wk11 to P, MOW4 to SB, Trawl to SB, W8 to SB, Het Veer to SB, finish | 36' |
| 86 | Start, buoy 1, GvW8 to P, GvW2 to P, VR to P, Wk9 to P, Samselbu to P, MOW4 to SB, Trawl to SB, W8 to SB, Het Veer to SB, finish | 42' |
| 87 | Start, buoy 1, GvW8 to P, GvW2 to P, VR to P, NE Akkaert to P, Samselbu to P, MOW4 to SB, Trawl to SB, W8 to SB, Het Veer to SB, finish | 46' |
| 88 | Start, buoy 1, GvW8 to P, GvW2 to P, VR to P, Samselbu to SB, Westpit to P, Wk11 to P, MOW4 to SB, Trawl to SB, W8 to SB, Het Veer to SB, finish | 52' |
| 89 | Start, buoy 1, Segre to SB, MOW4 to P, Wk11 to SB, VR to SB, GvW6 to SB, Trawl to P, W8 to SB, Het Veer to SB, finish | 36' |
| 90 | Start, buoy 1, Segre to SB, MOW4 to P, Wk11 to SB, Wk9 to SB, VR to SB, GvW6 to SB, Trawl to P, W8 to SB, Het Veer to SB, finish | 39' |
| 91 | Start, buoy 1, Segre to SB, MOW4 to P, NE Akkaert to SB, VR to SB, GvW6 to SB, Trawl to P, W8 to SB, Het Veer to SB, finish | 45' |
| 92 | Start, buoy 1, GvW8 to P, GvW2 to P, VR to SB, Westpit to SB, ZSB to SB, Grauw to P, Trawl to P, W8 to SB, Het Veer to SB, finish | 39' |
| 93 | Start, buoy 1, GvW8 to P, GvW2 to P, VR to SB, Grauw to P, Westpit to SB, ZSB to SB, Grauw to P, Trawl to P, W8 to SB, Het Veer to SB, finish | 43' |

- 94** Start, buoy 1, GvW8 to P, GvW2 to P, VR to SB, Grauw to P, Westpit to SB, ZSB to SB, OG1 to SB, Grauw to P, Trawl to P, W8 to SB, Het Veer to SB, finish **46'**
- 95** Start, buoy 1, GvW8 to P, GvW2 to P, VR to SB, Grauw to P, Westpit to SB, Rabsbank to SB, OG1 to SB, Grauw to P, Trawl to P, W8 to SB, Het Veer to SB, finish **51'**
- 96** Start, buoy 1, GvW8 to P, GvW2 to P, VR to SB, Grauw to P, Westpit to SB, Rabsbank to SB, OG1 to SB, Westpit to P, GvW6 to SB, Trawl to P, W8 to SB, Het Veer to SB, finish **57'**

PART 6 - WINDWARD-LEEWARD OFFSHORE COURSES AROUND INFLATABLE BUOYS

8. Courses

The Race Committee may lay a windward-leeward course, in accordance with the wind direction, between two inflatable orange buoys.

The course will be displayed, not later than the preparatory signal, (this changes RRS 27.1) on the starting vessel on yellow boards with dark blue letters AA, BB or B, followed by a yellow board with a dark blue letter C, D, E or F, which shows the approximate distance between the buoys 3 and 1.

Letter C = appr. 1.0 NM

Letter D = appr. 1.5 NM

Letter E = appr. 2.0 NM

Letter F = appr. 2.5 NM

The course of the first leg will be shown on the starting vessel with 3 black numbers on yellow boards.

The display of flag "R" on the starting vessel indicates that the finishing line in front of the harbour of Breskens will be used..

9.1 Marks

With exception of marks of the starting- and finishing line, all marks must be rounded to Port in the following order as stated in the courses with exception of the buoy 3', if this buoy is laid, the navigational buoys W8 and Het Veer must also be kept to SB (see drawing on the next page), in other words: 1 to P, 3 to P, W8 to SB, Het Veer to SB.

At the windward buoy 1 a spreader mark 1' may be laid. This buoy 1' is an inflatable buoy of the same type and/or colour as buoy 1 and may be laid at appr. 125 meters to the left of buoy 1, seen from the windward leg. This buoy 1' must, if laid, also be rounded to P.

At the leeward buoy 3 a "gate" can be made by laying a buoy 3'. This buoy 3' is of the same type and colour as buoy 3 and may be laid at appr. 100 meters to the right of buoy 3, as seen from the down wind leg.

In the first leg and in the last leg to the finish downwind of buoy 3, the buoy 3 or the buoys 3 and 3' are no mark(s) of the course.

11.2 Starting line

Between the mast with the orange flag on the starting vessel to SB and the yellow or other coloured inflatable buoy to P.

The starting line is situated at appr. 2 cables downwind of buoy 3.

An inner limit mark can be laid in the vicinity of the starting vessel. This inner limit mark may lay on or in the vicinity of the starting line and must be considered as a mark of the starting line.

12. Change of the next leg of the course

12.1 To change the next leg of the course, the Race Committee will lay a new mark (or move the finishing line) and remove the original mark as soon as practicable. When in a subsequent change a new mark is replaced, it will be replaced by the original mark.

12.2 If Mark 1 is changed after the start of a race, there will be no spreader mark 1'.

12.3 Except at a gate, boats shall pass between the Race Committee boat signaling the change of the next leg and the nearby mark, leaving the mark to port and the Race Committee boat to starboard. This changes RRS 28.1.

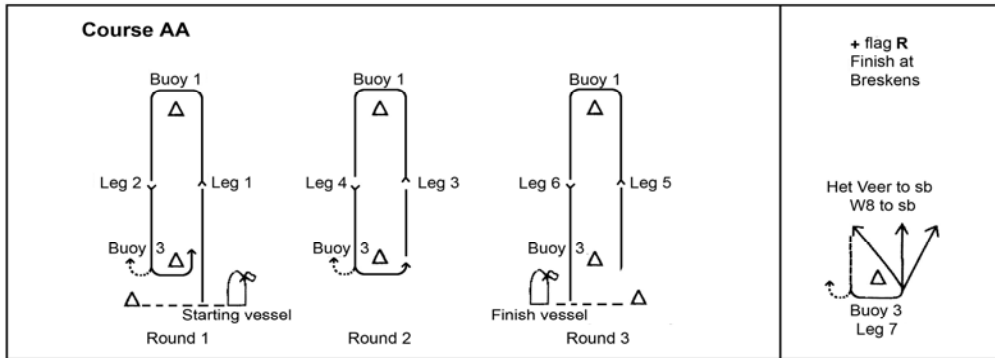
13.1 Finishing line downwind of buoy 3:

Between the blue flag on the finishing vessel to SB and a yellow or other coloured inflatable buoy to P.

The finishing line is laid at appr. 2 cables downwind of buoy 3.

Finishing line at Breskens (flag "R" on the starting vessel):

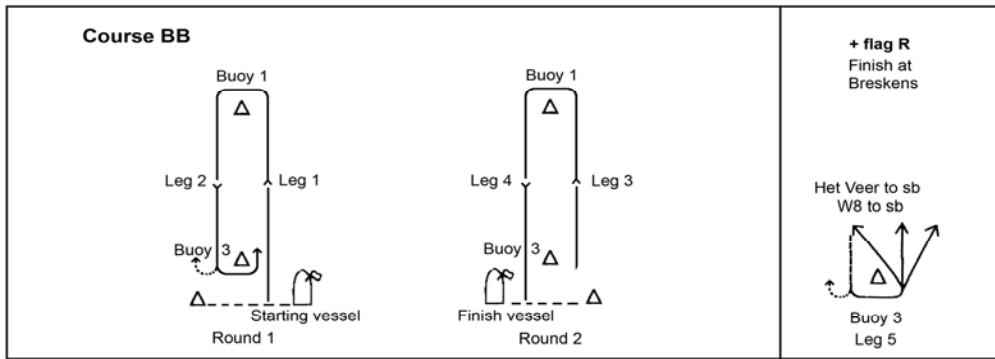
This is the line between the light structure on the Western breakwater of the commercial harbour of Breskens and the blue flag on the finishing vessel.



Course AA: Start, 1, 3, 1, 3, 1, finish downwind of buoy 3.

Course AA + flag R: Start, 1, 3, 1, 3, 1, 3, W8, Het Veer, finish at Breskens

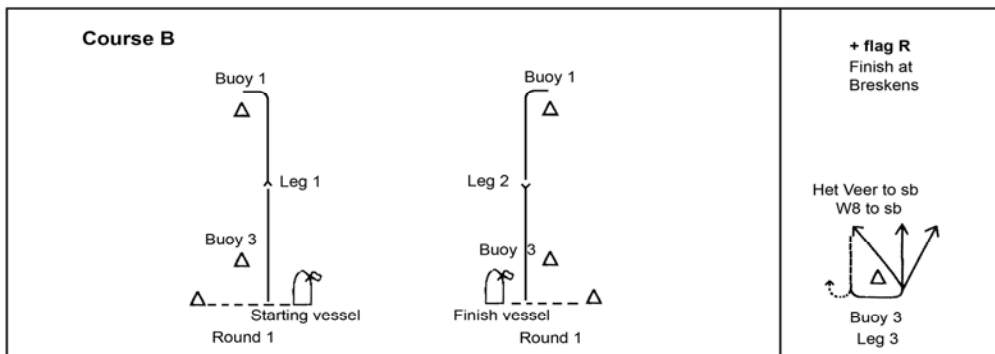
In leg 1 and in the last leg to the finish downwind of buoy 3, buoy 3 or buoys 3 and 3' are no mark(s) of the course.



Course BB: Start, 1, 3, 1, finish downwind of buoy 3.

Course BB + flag R: Start, 1, 3, 1, 3, W8, Het Veer, finish at Breskens.

In leg 1 and in the last leg to the finish downwind of buoy 3, buoy 3 or buoys 3 and 3' are no mark(s) of the course.



Course B: Start, 1, finish downwind of buoy 3.

Course B + flag R: Start, 1, 3, W8, Het Veer, finish at Breskens

In leg 1 and in the last leg to the finish downwind of buoy 3, buoy 3 or buoys 3 and 3' are no mark(s) of the course.